

Test Report

Report No.: TS24060134



Verify authenticity

Applicant	Mid Ocean Brands B.V
Address	7/F., Kings Tower, 111 King Lam Street, Cheung Sha Wan, Kowloon, Hong Kong
Report Date	2024-06-20

Hangzhou C&K Testing Technic Co., Ltd.



Hangzhou C&K Testing Technic Co., Ltd

Add: 1/F, No. 4 Building, Huaye Hi-Tech Industrial Park, No. 1180, Bin'an Road, Binjiang District, Hangzhou 310052, China
Lab Add: 4/F No. 3 and 1/F No. 4 Building, Huaye Hi-Tech Industrial Park, No. 1180, Bin'an Road, Binjiang District, Hangzhou 310052, China
Hotline: 4006-721-723 Tel: +86 571-8720 6535 Fax: +86 571-8990 0719 E-mail: test@cirs-group.com Website: www.cirs-ck.com

Test Report

Applicant	Mid Ocean Brands B.V
Address	7/F., Kings Tower, 111 King Lam Street, Cheung Sha Wan, Kowloon, Hong Kong
Sample Name	ABS TROLLEY CASE
Type/ Model	M09178-03,M09178-05,M09178-37,M09178-16,M09178-85,M02341-03
Material/Colour	/
Other Info.	Your vendor code: 113098
The sample information included above and test component(s) are provided and confirmed by the applicant	
Sample Received Date	2024-06-04, 2024-06-12, 2024-06-19
Test Period	2024-06-04~2024-06-19
Test Requirement	To determine the following items in the submitted sample(s) according to the client's requirement.

Test Item(s)	Test Result(s)
Phthalates Content- Refer to the Annex XVII of Regulation (EC) No 1907/2006	Pass
Lead(Pb) Content- Refer to the Annex XVII of Regulation (EC) No 1907/2006	Pass
Cadmium (Cd) Content- Refer to the Annex XVII of Regulation (EC) No 1907/2006	Pass
Azo Dyes Content- Refer to the Annex XVII of Regulation (EC) No 1907/2006	Pass
PAHs Content- Refer to the Annex XVII of Regulation (EC) No 1907/2006	Pass
Color Fastness to Rubbing	Pass

Prepared by: Meng Qi Reviewed by: Li Xuefeng Accredited Signatory by: Zhang Yangyang

Meng Qi Li Xuefeng Zhang Yangyang

Issue date: 2024-06-20

Test Component(s):

No.	Sample Serial No.	Test Component(s)	Type/Model	Material/Colour	Other Info.
001	TS24060134001	Silver Paint (on Handle)+Silver Paint (on Handle)	/	/	/
002	TS24060134002	Black Plastic Trolley Handle (under Paint)+Black Plastic Handle+Black Plastic Trolley Handle (under Paint)	/	/	/
003	TS24060134003	Blue Plastic Cover+Blue Plastic Front Cover+Black Plastic Cover	/	/	/
004	TS24060134004	Black Plastic Zipper Teeth+Grey Plastic Buckle+Grey Lining Zipper Teeth	/	/	/
005	TS24060134005	Black Plastic Lock+Black Plastic Wheel Support	/	/	/
006	TS24060134006	Black Plastic Wheel Holder+Black Soft Plastic Handle+Black Soft Plastic Binding	/	/	/
007	TS24060134007	Black Soft Plastic Wheel	/	/	/
008	TS24060134008	Grey Elastic Band	/	/	/
009	TS24060134009	Black Zipper Fabric+Grey Lining+Grey Lining Zipper Fabric	/	/	/
010	TS24060134010	Silver Metal Trolley Pole (Under Paint)	/	/	/
011	TS24061071001	Silver Metal Zipper Puller (Small)	/	/	/
012	TS24061071002	Silver Metal Zipper Slider (Small)	/	/	/
013	TS24061071003	Silver Metal Zipper Slider (Big)	/	/	/
014	TS24061071004	Silver Metal Zipper Puller (Big)	/	/	/
015	TS24060134015	Silver Metal Screw (on Trolley Pole)	/	/	/
016	TS24060134016	Silver Metal Pad(bottom)	/	/	/
017	TS24060134017	Black Screw Inside	/	/	/
018	TS24060134018	Black Cylinder	/	/	/

Hangzhou C&K Testing Technic Co., Ltd

Add:1/F,No.4 Building, Huaye Hi-Tech Industrial Park, No.1180, Bin'an Road, Binjiang District, Hangzhou 310052, China

Lab Add: 4/F No.3 and 1/F No.4 Building, Huaye Hi-Tech Industrial Park, No.1180, Bin'an Road, Binjiang District, Hangzhou 310052, China

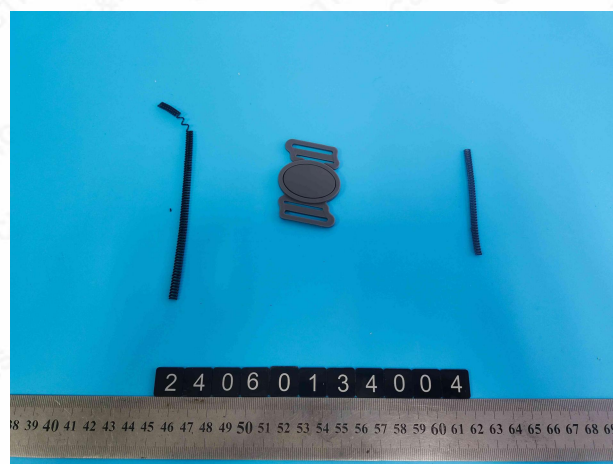
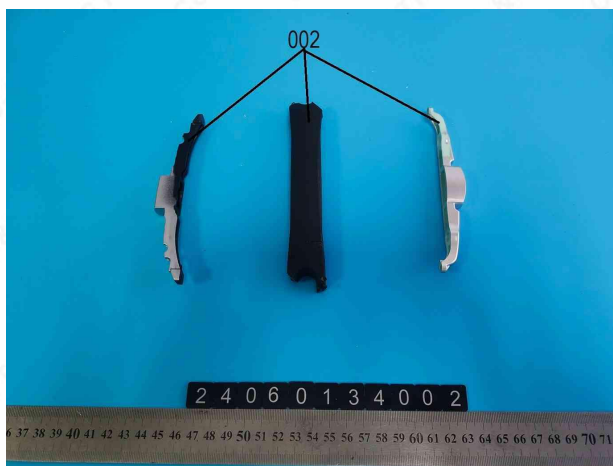
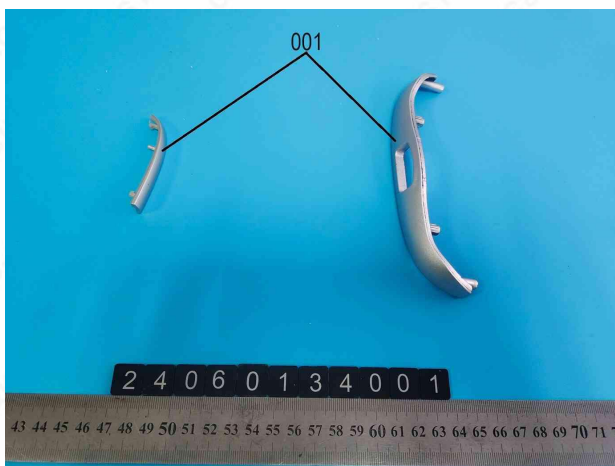
Hotline:4006-721-723 Tel:+86 571-8720 6535 Fax:+86 571-8990 0719 E-mail:test@cirs-group.com Website:www.cirs-ck.com

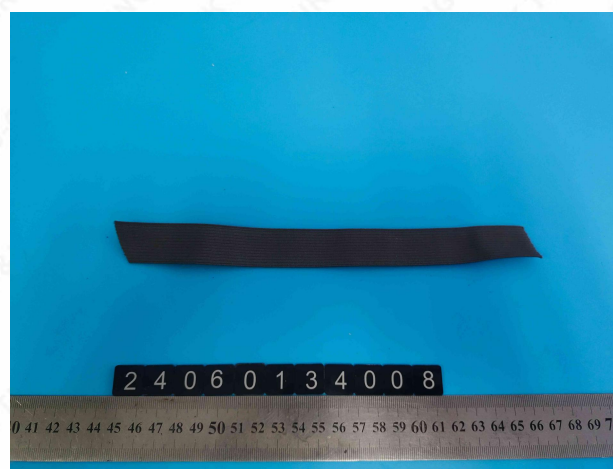
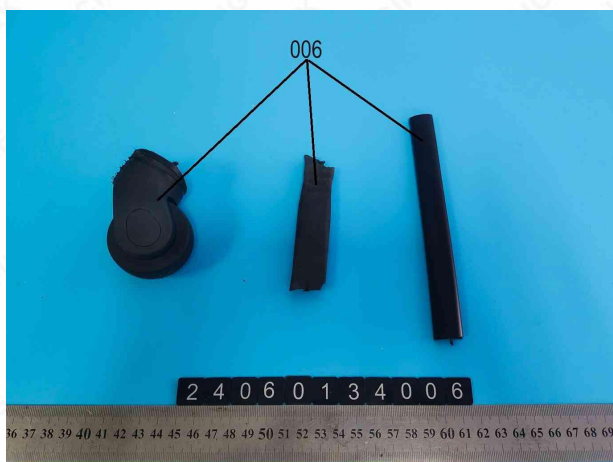
No.	Sample Serial No.	Test Component(s)	Type/Model	Material/Colour	Other Info.
019	TS24060134019	Grey Plastic Base	/	/	/
020	TS24060134020	Sliver Metal Badge	/	/	/
021	TS24060134021	Grey Lining Mesh Fabric	/	/	/
022	TS24060134022	Black Metal Badge	/	/	/
023	TS24060134023	Grey Plastic Base+Grey Elastic Band	/	/	/
024	TS24060134024	Grey Elastic Band+Grey Lining	/	/	/
025	TS24060134025	Black Zipper Fabric+Grey Lining Mesh Fabric+Grey Lining Zipper Fabric	/	/	/
026	TS24060134026	Grey Lining	/	/	/
027	TS24060134027	Grey Lining Mesh Fabric	/	/	/
028	TS24060134028	Black Plastic Trolley Handle (under Paint)+Black Plastic Trolley Handle (under Paint)	/	/	/
029	TS24060134029	Black Plastic Handle+Black Soft Plastic Handle	/	/	/
030	TS24060134030	Blue Plastic Cover+Black Plastic Cover	/	/	/
031	TS24060134031	Inside foam+Grey adhesive tape	/	/	/
032	TS24060134032	Grey binding fabric+Black Piping fabric	/	/	/
033	TS24060134033	Grey binding fabric	/	/	/
034	TS24060134034	Black Soft Plastic Binding	/	/	/

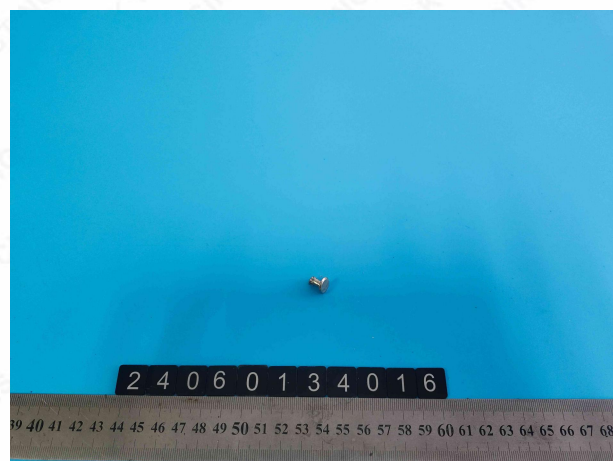
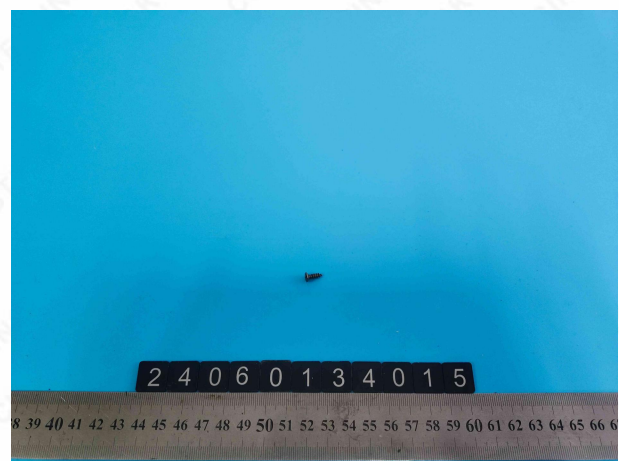
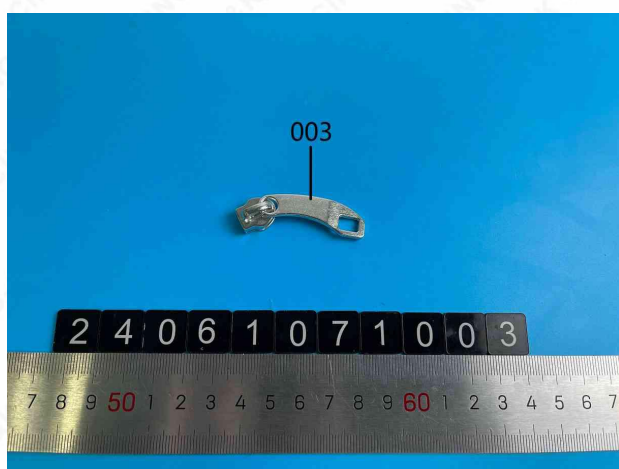
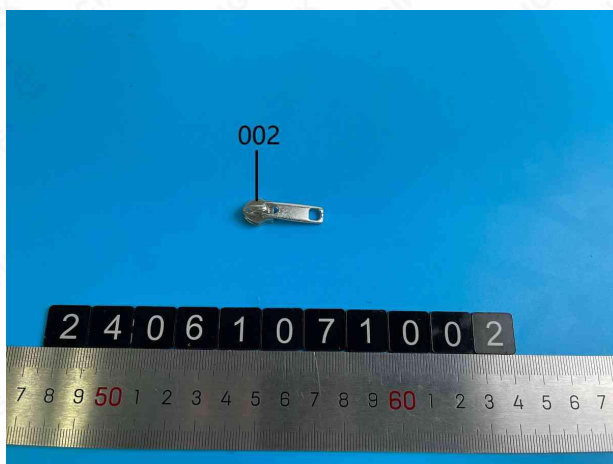
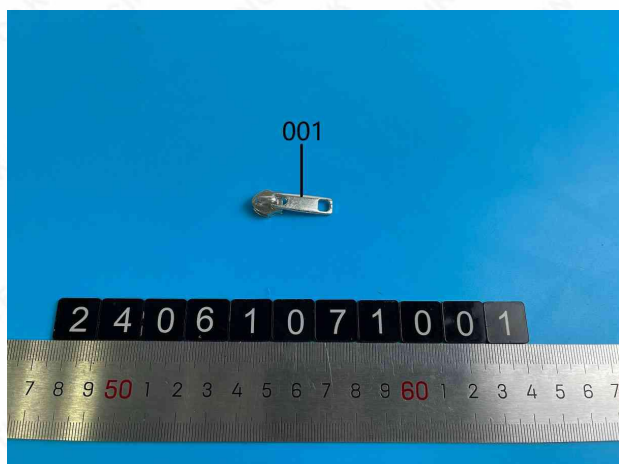
Photo provided by client:

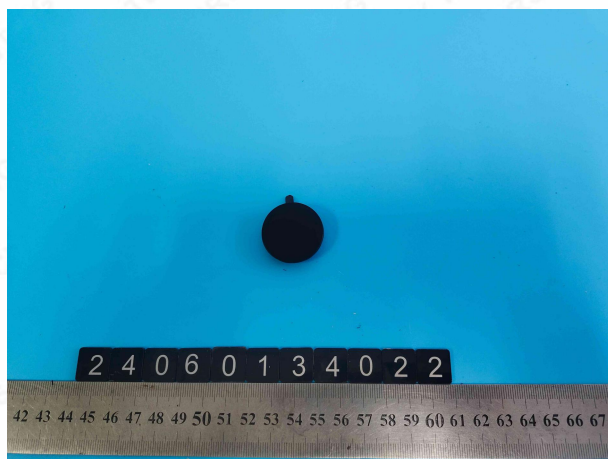
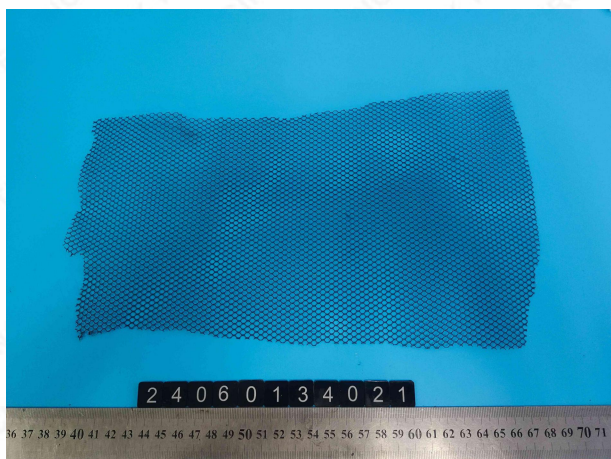
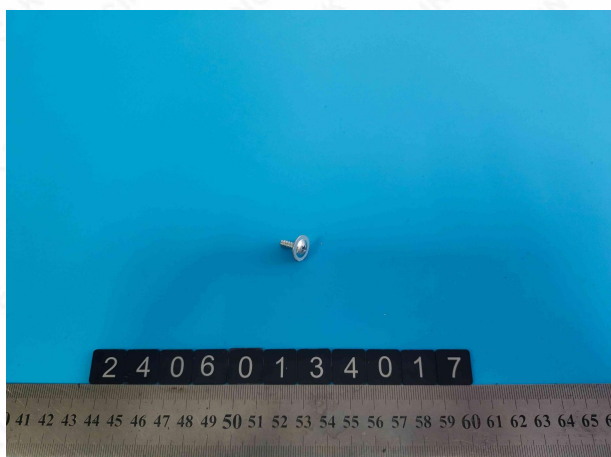


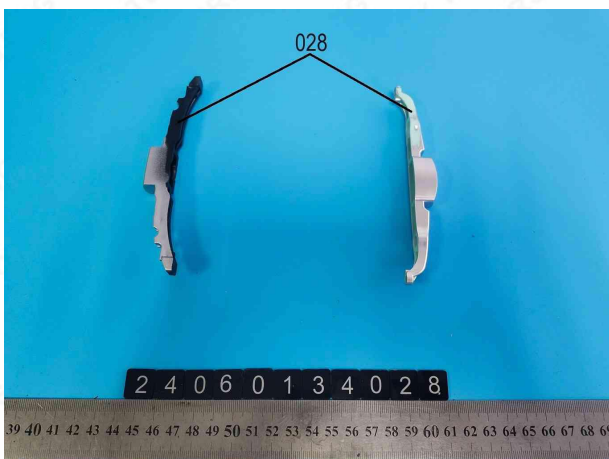
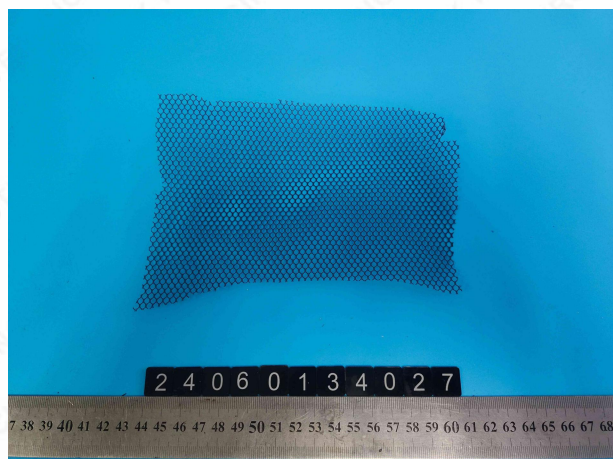
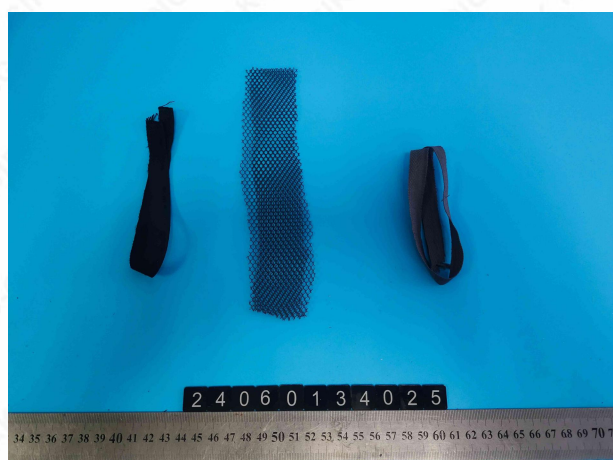
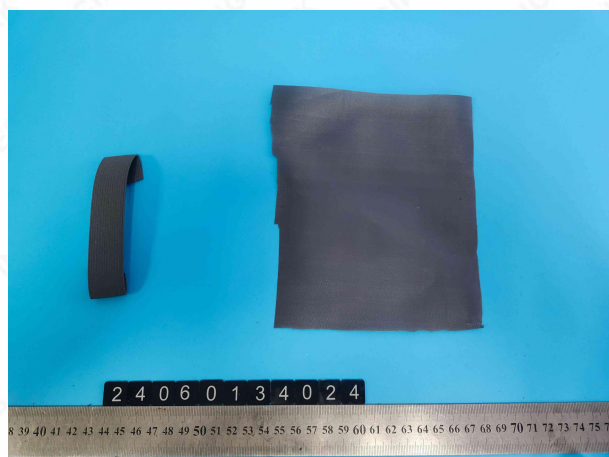
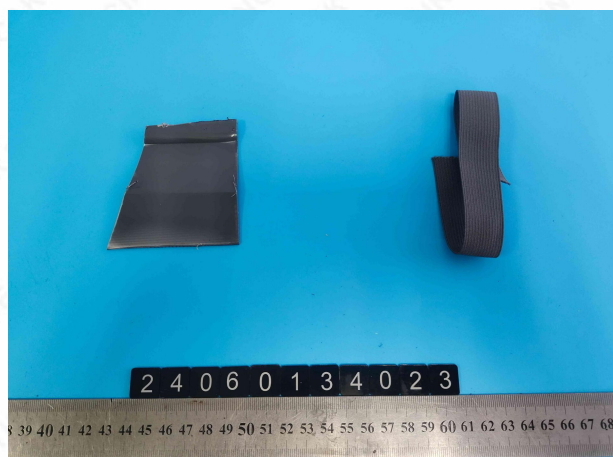
Photo(s):

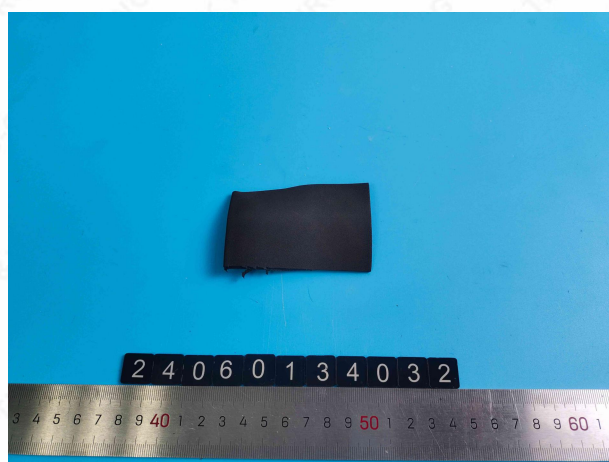
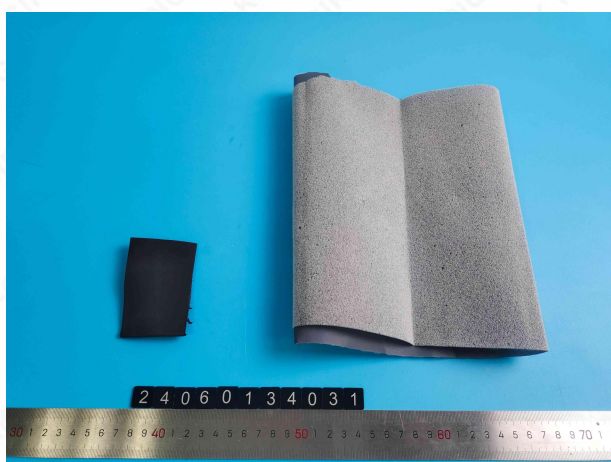
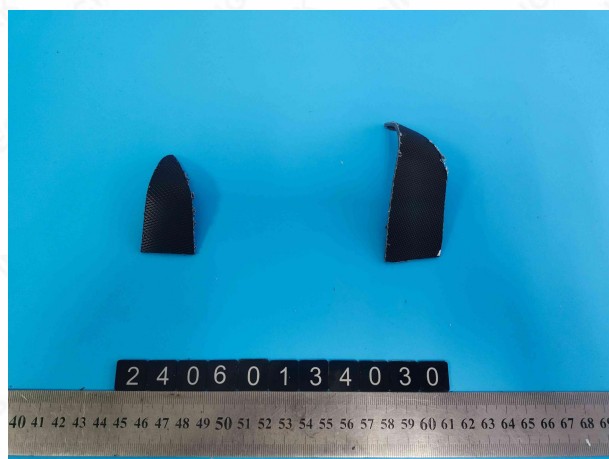












Test Result(s):
Phthalates Content

Test Item(s)	Test method	Requirement	MDL	Unit	Test Result(s)			
					001	002	003	004
Butylbenzylphthalate(BBP)	EN 14372:2004	/	0.001	%	N.D.	N.D.	N.D.	N.D.
Di-(2-ethylhexyl)-phthalate (DEHP)	EN 14372:2004	/	0.001	%	0.013	0.003	0.003	N.D.
Dibutylphthalate(DBP)	EN 14372:2004	/	0.001	%	0.026	N.D.	N.D.	N.D.
Diisobutyl phthalate(DIBP)	Refer to EN 14372:2004	/	0.001	%	N.D.	N.D.	N.D.	N.D.
SUM (DIBP+DBP+BBP+DEHP)	EN 14372:2004	<0.1	0.004	%	0.039	N.D.	N.D.	N.D.
Di-iso-decylphthalate(DIDP)	EN 14372:2004	/	0.005	%	N.D.	N.D.	N.D.	N.D.
Di-iso-nonylphthalate(DINP)	EN 14372:2004	/	0.005	%	N.D.	N.D.	N.D.	N.D.
Di-n-octyl phthalate(DNOP)	EN 14372:2004	/	0.001	%	N.D.	N.D.	N.D.	N.D.
SUM (DNOP+DINP+DIDP)	EN 14372:2004	<0.1	0.011	%	N.D.	N.D.	N.D.	N.D.

Test Item(s)	Test method	Requirement	MDL	Unit	Test Result(s)				
					005	006	007	023	031
Butylbenzylphthalate(BBP)	EN 14372:2004	/	0.001	%	N.D.	N.D.	N.D.	N.D.	N.D.
Di-(2-ethylhexyl)-phthalate (DEHP)	EN 14372:2004	/	0.001	%	0.002	N.D.	N.D.	0.002	N.D.
Dibutylphthalate(DBP)	EN 14372:2004	/	0.001	%	N.D.	N.D.	N.D.	N.D.	N.D.
Diisobutyl phthalate(DIBP)	Refer to EN 14372:2004	/	0.001	%	N.D.	N.D.	N.D.	N.D.	N.D.
SUM (DIBP+DBP+BBP+DEHP)	EN 14372:2004	<0.1	0.004	%	N.D.	N.D.	N.D.	N.D.	N.D.
Di-iso-decylphthalate(DIDP)	EN 14372:2004	/	0.005	%	N.D.	N.D.	N.D.	N.D.	N.D.
Di-iso-nonylphthalate(DINP)	EN 14372:2004	/	0.005	%	N.D.	N.D.	N.D.	N.D.	N.D.
Di-n-octyl phthalate(DNOP)	EN 14372:2004	/	0.001	%	N.D.	N.D.	N.D.	N.D.	N.D.
SUM (DNOP+DINP+DIDP)	EN 14372:2004	<0.1	0.011	%	N.D.	N.D.	N.D.	N.D.	N.D.

Remark:

1. MDL = Method Detection Limit; N.D. = Not detected (<MDL)

Lead(Pb) Content

Test Item(s)	Test method	Requirement	MDL	Unit	Test Result(s)				
					001	002	003	004	005
Lead(Pb)	EPA 3052:1996; EPA 6010D:2018	<500	5	mg/kg	N.D.	71	N.D.	N.D.	N.D.

Test Item(s)	Test method	Requirement	MDL	Unit	Test Result(s)				
					006	007	008	009	019
Lead(Pb)	EPA 3052:1996; EPA 6010D:2018	<500	5	mg/kg	N.D.	N.D.	N.D.	N.D.	N.D.

Test Item(s)	Test method	Requirement	MDL	Unit	Test Result(s)		
					021	031	032
Lead(Pb)	EPA 3052:1996; EPA 6010D:2018	<500	5	mg/kg	N.D.	N.D.	N.D.

Test Item(s)	Test method	Requirement	MDL	Unit	Test Result(s)				
					010	011	012	013	014
Lead(Pb)	EPA 3050B:1996; EPA 6010D:2018	<500	5	mg/kg	N.D.	N.D.	N.D.	N.D.	N.D.

Test Item(s)	Test method	Requirement	MDL	Unit	Test Result(s)					
					015	016	017	018	020	022
Lead(Pb)	EPA 3050B:1996; EPA 6010D:2018	<500	5	mg/kg	N.D.	N.D.	N.D.	N.D.	N.D.	N.D.

Remark:

1. MDL = Method Detection Limit; N.D. = Not detected (<MDL)

Cadmium (Cd) Content

Test Item(s)	Test method	Requirement	MDL	Unit	Test Result(s)					
					001					
Cadmium(Cd)	EN 1122:2001	<1000	5	mg/kg	N.D.					

Test Item(s)	Test method	Requirement	MDL	Unit	Test Result(s)			
					002	003	004	005
Cadmium(Cd)	EN 1122:2001	<100	5	mg/kg	N.D.	N.D.	N.D.	N.D.

Test Item(s)	Test method	Requirement	MDL	Unit	Test Result(s)			
					006	007	023	031
Cadmium(Cd)	EN 1122:2001	<1000	5	mg/kg	N.D.	N.D.	N.D.	N.D.

Remark:

1. MDL = Method Detection Limit; N.D. = Not detected (<MDL)

Azo Dyes Content

Test Method: ISO 14362-1:2017

Test Item(s)	CAS No.	Requirement	MDL	Unit	Test Result(s)		
					024	025	033
2,4,5-Trimethylaniline	137-17-7	≤ 30	5	mg/kg	N.D.	N.D.	N.D.
2,4-Diaminoanisole	615-05-4	≤ 30	5	mg/kg	N.D.	N.D.	N.D.
2,4-Toluylenediamine	95-80-7	≤ 30	5	mg/kg	N.D.	N.D.	N.D.
P-Cresidine	120-71-8	≤ 30	5	mg/kg	N.D.	N.D.	N.D.
2-Naphthylamine	91-59-8	≤ 30	5	mg/kg	N.D.	N.D.	N.D.
4,4'-Methylenedi-O-Toluidine	838-88-0	≤ 30	5	mg/kg	N.D.	N.D.	N.D.
3,3'-Dimethylbenzidine	119-93-7	≤ 30	5	mg/kg	N.D.	N.D.	N.D.
3,3'-Dimethoxybenzidine	119-90-4	≤ 30	5	mg/kg	N.D.	N.D.	N.D.
3,3'-Dichlorobenzidine	91-94-1	≤ 30	5	mg/kg	N.D.	N.D.	N.D.
4,4'-Diaminodiphenylmethane	101-77-9	≤ 30	5	mg/kg	N.D.	N.D.	N.D.
4,4'-Thiodianiline	139-65-1	≤ 30	5	mg/kg	N.D.	N.D.	N.D.
4,4'-Oxydianiline	101-80-4	≤ 30	5	mg/kg	N.D.	N.D.	N.D.
4,4'-Methylene-Bis- (2-Chloro-Aniline)	101-14-4	≤ 30	5	mg/kg	N.D.	N.D.	N.D.
4-Aminobiphenyl	92-67-1	≤ 30	5	mg/kg	N.D.	N.D.	N.D.
4-Aminoazobenzene	60-09-3	≤ 30	5	mg/kg	N.D.	N.D.	N.D.
4-Chloro-O-Toluidine	95-69-2	≤ 30	5	mg/kg	N.D.	N.D.	N.D.
5-Nitro-o-Toluidine	99-55-8	≤ 30	5	mg/kg	N.D.	N.D.	N.D.
4-Chloroaniline	106-47-8	≤ 30	5	mg/kg	N.D.	N.D.	N.D.
Benzidine	92-87-5	≤ 30	5	mg/kg	N.D.	N.D.	N.D.
O-anisidine	90-04-0	≤ 30	5	mg/kg	N.D.	N.D.	N.D.
O-aminoazotoluene	97-56-3	≤ 30	5	mg/kg	N.D.	N.D.	N.D.
O-toluidine	95-53-4	≤ 30	5	mg/kg	N.D.	N.D.	N.D.

Remark:

1. MDL = Method Detection Limit; N.D. = Not detected (<MDL)

PAHs Content

Test Method: A1PS GS 2019:01 PAK

Test Item(s)	CAS No.	Requirement	MDL	Unit	Test Result(s)				
					001	028	029	030	034
Benzo (a) anthracene (BaA)	56-55-3	≤1	0.2	mg/kg	N.D.	N.D.	N.D.	N.D.	N.D.
Benzo (a) pyrene (BaP)	50-32-8	≤1	0.2	mg/kg	N.D.	N.D.	N.D.	N.D.	N.D.
Benzo (b) fluoranthene (BbF)	205-99-2	≤1	0.2	mg/kg	N.D.	N.D.	N.D.	N.D.	N.D.
Benzo (e) pyrene (BeP)	192-97-2	≤1	0.2	mg/kg	N.D.	N.D.	N.D.	N.D.	N.D.
Benzo (j) fluoranthene (BjF)	205-82-3	≤1	0.2	mg/kg	N.D.	N.D.	N.D.	N.D.	N.D.
Benzo (k) fluoranthene (BkF)	207-08-9	≤1	0.2	mg/kg	N.D.	N.D.	N.D.	N.D.	N.D.
Dibenzo (a,h) anthracene (DBA)	53-70-3	≤1	0.2	mg/kg	N.D.	N.D.	N.D.	N.D.	N.D.
Chrysene (CHR)	218-01-9	≤1	0.2	mg/kg	N.D.	N.D.	N.D.	N.D.	N.D.

Remark:

1. MDL = Method Detection Limit; N.D. = Not detected (<MDL)

Color Fastness to Rubbing

Test Item(s)		Test method	Requirement	Unit	Test Result(s)		
					008	026	027
Color Fastness to Rubbing	Dry	EN ISO 105-X12:2016	≥3	Grade	4-5	4-5	4-5
	Wet		≥3	Grade	4-5	4-5	4-5

Remark:

1. MDL = Method Detection Limit; N.D. = Not detected (<MDL)

2. Grade 1– The Worst, Grade 3- Middle Grade, Grade 5– The Best; Source Light: D65

Statement:

- I This report is invalid without the signature of accredited signatory. Any alteration to this report is also invalid.
- II This report is invalid without the special seal of inspection & testing.
- III This report shall not be part copy without written approval of Hangzhou C&K Testing Technic Co., Ltd..
- IV Any commercial activity such as advertising or propaganda is not allowed without authorization of Hangzhou C&K Testing Technic Co., Ltd..
- V The test results shown in this report refer only to the sample submitted by applicant.
- VI Please respond to Hangzhou C&K Testing Technic Co., Ltd. within fifteen working days upon receipt of this report if there is any objection.
- VII Hangzhou C&K Testing Technic Co., Ltd. guarantee that we shall not disclose information such as the commercial information, technical documents or test report to any third party.
- VIII The applicant should undertake the legal responsibility that result from providing untruth information.
- IX This report is only for scientific research, teaching, internal quality control of enterprises, etc without the seal of China Metrology Accreditation.
- X The quantity of the sample does not meet the requirements of retest and arbitration, it shall be regarded as the customer waiving the right of retest and arbitration.

The end of report